



May 29, 2020

TO: Snohomish Health District Board of Health

SUBJECT: Recommendation to request a variance to implement all Phase 2 modifications of community mitigation strategies identified in the *Phased Approach to Reopening Washington Plan*.

Dear Board Members,

Attached are an application and relevant appendices addressing the Snohomish Health District's request for a variance from the Washington State Department of Health (DOH) to proceed to Phase 2 of the state's *Reopening Washington Plan*.

Such a transition would permit resumption of the following in Snohomish County, provided that individuals and enterprises involved in such activity adhere to Washington State guidelines for COVID-19 prevention and control applicable to their setting:

- Participation in outdoor recreation involving 1-4 people who are not household members (e.g., camping, beaches, etc.)
- Gathering with 1-5 people per week who are not household members
- Limited non-essential travel within proximity of an individual's home
- Manufacturing enterprises not already approved for activity
- New construction
- In-home/domestic services (e.g., nannies, housecleaning, etc.)
- Retail (in-store purchases allowed with restrictions)
- Real estate
- Professional services and office-based businesses (telework remains strongly encouraged)
- Hair salons, stylists, barbers, and nail salons
- Restaurants (seating at <50% maximum capacity and no table size >5 customers)

Beyond these and previously approved (Phase 1 and essential) activities, remaining elements of the Governor's March 23, 2020, Stay Home-Stay Healthy order would remain in effect. If our application is approved, Health Officer's Orders 20-059, -060, and/or 061 may be modified or rescinded as appropriate to remain coherent with this phase. Decisions on when and how DOH will allow a county with a Phase 2 variance to move to Phase 3 have not yet been made, but staff will track that process, work toward making Snohomish County ready for that transition as soon as feasible and permitted, and keep you informed of our progress.

Based on the information in the application demonstrating Snohomish County's recent case reports and our capacity for testing, case investigation, contact tracing, hospital surge, and protection of vulnerable populations, I think it is reasonable to proceed forward. Therefore, I recommend that Snohomish County request a variance to implement all Phase 2 modifications at this time.

Sincerely,

Christopher Spitters, MD, MPH
Health Officer

Staff member's name: Shawn Frederick

Topic of staff report: Resolution 20-16, Application for variance to Phase 2 of Washington's Safe Start Plan

Proposed Board action

Approve Resolution 20-16 authorizing the submission and application for a request for a variance from the Washington State Department of Health to proceed to Phase 2 of the Safe Start Plan.

Background

On May 1, 2020, Governor Inslee announced a phased approach to reopening all aspects of public life in Washington State. This Safe Start Plan calls for four distinct phases lasting a minimum of three weeks each. Not all counties will be in the same phase at the same time. Snohomish County is currently in Phase 1. At this time, a move to Phase 2 is not automatic. In order to move to Phase 2, an application for a variance must be submitted to the Washington State Secretary of Health. In Snohomish County, the variance request begins with submission to the Board of a signed recommendation by Dr. Spitters that the County move into Phase 2. Dr. Spitters has issued a recommendation to that effect. The next step in the process is for the Board to take official action and by a majority vote, recommend moving forward with an application to move to Phase 2. Resolution 20-16 formally authorizes submission of a variance application for Snohomish County.

If Resolution 20-16 is approved, the County Council will vote on the District's plan to apply for Phase 2. The approvals by the legislative bodies will be packaged up and sent to the State, along with documentation regarding testing processes, data on reported positive tests, investigation protocols, isolation and quarantine facilities, and hospital preparedness. The State will then approve or deny the application for a variance.

Board Authority

On May 19, 2020, the Department of Health issued instructions on how counties can apply for a variance to move from Phase 1 to Phase 2 of the Safe Start Plan. This action is consistent with that guidance.

Recommended Motion

MOVE TO APPROVE RESOLUTION 20-16



SNOHOMISH HEALTH DISTRICT
RESOLUTION OF THE BOARD OF HEALTH

RESOLUTION NUMBER: 20-16

RESOLUTION SUBJECT: A RESOLUTION OF THE BOARD OF HEALTH OF SNOHOMISH COUNTY AUTHORIZING SUBMISSION OF AN APPLICATION AND REQUEST FOR A VARIANCE FROM THE WASHINGTON STATE DEPARTMENT OF HEALTH TO PROCEED TO PHASE 2 OF THE STATE'S REOPENING WASHINGTON PLAN

WHEREAS, on January 31, 2020, the United States Department of Public Health and Human Services Secretary Alex Azar declared a public emergency for the novel coronavirus (COVID-19) beginning on January 27, 2020; and

WHEREAS, on February 29, 2020, Governor Jay Inslee declared a state of emergency exists in all counties in the State of Washington due to the number of confirmed cases of COVID-19 in the State; and

WHEREAS, on March 23, 2020, Governor Inslee issued Proclamation 20-25, *Stay Home, Stay Healthy*, which requires citizens to remain in their homes, except to conduct essential business; and

WHEREAS, the Governor's *Stay Home, Stay Healthy* order required closure of all non-essential businesses; and

WHEREAS, on May 1, 2020, Governor Inslee announced his *Safe Start Plan*, which implements a phased approach to re-opening all aspects of public life; and

WHEREAS, Snohomish County is currently in Phase 1 of the *Safe Start Plan*; and

WHEREAS, on May 19, 2020, Governor Inslee announced eligibility requirements for counties over 75,000 to move to Phase 2; and

WHEREAS, counties that meet certain prescribed criteria may apply for a variance from said eligibility requirement; and

WHEREAS, while Snohomish County has not yet met every requirement that would automatically trigger moving to Phase 2, it has demonstrated robust public health readiness, which demonstrates that it should qualify for a variance; and

WHEREAS, Snohomish Health District has demonstrated testing capacity, established contact tracing and case investigation protocols, and has protections in place for vulnerable populations; and

WHEREAS, local hospitals have capacity and the PPE necessary to combat the virus; and

WHEREAS, it is necessary to the continued economic and social viability of the county to move to Phase 2 of the *Safe Start Plan*.

Snohomish Health District
Res. 20-16
Phase 2 Variance Application

NOW, THEREFORE, BE IT RESOLVED, the Snohomish County Board of Health hereby authorizes the application and submission of a request for a variance from the Washington State Board of Health to move to Phase 2 of the *Safe Start Plan*. Staff is further authorized to take any and all steps necessary to effectuate this authorization, including but not limited to supplying all data and documentation supporting the application and request.

ADOPTED this 29th day of May.

ATTEST:

Stephanie Wright, Chair
Board of Health

Shawn Frederick, MBA
Administrative Officer

Hospital Attestation Template
SHD COVID-19 Variance Application



PROVIDENCE
Regional Medical Center
Everett

Shawn Frederick, MBA
Administrative Officer
Snohomish Health District
3020 Rucker Ave, Ste 306
Everett, WA 98201

Dear Mr. Frederick:

I am writing to attest to the following with respect to Providence Regional Medical Center Everett and the Health District's request for a variance to move to Phase 2 of the *Reopening Washington Plan*:

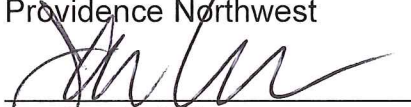
- We currently have 20 percent surge capacity to accommodate a 20 percent increase in suspected or confirmed COVID-19 hospitalizations.
- We are reporting, and will continue to report daily, including on weekends, all data requested by the Washington State Department of Health (DOH) into WA HEALTH.
- We have at least a 14-day supply on-hand of PPE, including N-95 respirators, surgical masks, face shields, gloves, and gowns.
- No staff person is wearing any one N95 respirator or surgical mask for longer than one shift.
- We are following PPE guidance on reuse or extended use as set forth in <https://www.doh.wa.gov/Portals/1/Documents/1600/coronavirus/PPE-Reuse.pdf>.

If you or DOH have any questions regarding this attestation or Providence Regional Medical Center Everett's capacity to respond to a surge of demand for acute care due to COVID-19, please feel free to contact us.

Sincerely,



Kim E Williams
Chief Executive Officer
Providence Northwest



Jay Cook, MD
Chief Medical Officer
Providence Regional Medical Center Everett

From: [Rivera, Stacia N](#)
To: [Sachdeva, Sandeep](#); [Chris Spitters](#)
Cc: [Shawn Frederick](#); [Welling, Lynn E](#); [Rivera, Stacia N](#)
Subject: RE: Response from Swedish Edmonds
Date: Thursday, May 28, 2020 4:44:55 PM

Good Afternoon-

Both Dr. Lynn Welling, Chief Clinical Officer and Jeffrey Robert, Chief Operating Officer have virtually signed off on the Snohomish County Attestation. I am waiting for the actual signatures on the attestation and will send once I have received. Please consider this email as a start that Swedish is a “yes” across the board for the following:

- We currently have 20 percent surge capacity to accommodate a 20 percent increase in suspected or confirmed COVID-19 hospitalizations.
- We are reporting, and will continue to report daily, including on weekends, all data requested by the Washington State Department of Health (DOH) into WA HEALTH.
- We have at least a 14-day supply on-hand of PPE, including N-95 respirators, surgical masks, face shields, gloves, and gowns.
- No staff person is wearing any one N95 respirator or surgical mask for longer than one shift.
- We are following PPE guidance on reuse or extended use as set forth in <https://www.doh.wa.gov/Portals/1/Documents/1600/coronavirus/PPE-Reuse.pdf>.

Please let me know if you have any questions, I can be reached by cell at any time.

Stacia Rivera MBA, CHOP
Swedish Medical Center
Director Environment of Care, Emergency Management, and Security
747 Broadway MS-NT1450
Seattle, Washington 98122
Office Phone 206.386.2915 | Mobile 206.930.0173 | Pager 206.998.4563 | Fax 206.215.3071
Email stacia.hayes@swedish.org | www.swedish.org

From: Sachdeva, Sandeep
Sent: Thursday, May 28, 2020 11:26 AM
To: Rivera, Stacia N <Stacia.Hayes@swedish.org>; Chris Spitters <cspitters@snohd.org>
Cc: sfrederick@snohd.org; Welling, Lynn E <Lynn.Welling@Swedish.org>
Subject: Response from Swedish Edmonds

Hi Chris – it was nice catching up with you just a few minutes ago. Shawn – so sorry you and I couldn’t connect earlier in the morning. Stacia Rivera is our awesome System’s Director for Emergency Response. She will be submitting the attestation on behalf of Swedish Edmonds by the EOTD today.

Sincerely,

Sandeep.

Sandeep Sachdeva, MD, CHCQM, FACP
Chief Medical Officer – Swedish Edmonds & Swedish Mill Creek
Chief Medical Officer – Medical Staff Services, Swedish Health System
Mobile: 206 437 8193
Administrative Assistant: Terri.Fisher@Swedish.org; 425 640 4002

Caregiver Wellness Caring for Caregivers -
<https://providence4.sharepoint.com/sites/SwedishCaregiverWellness>

This message is intended for the sole use of the addressee, and may contain information that is privileged, confidential and exempt from disclosure under applicable law. If you are not the addressee you are hereby notified that you may not use, copy, disclose, or distribute to anyone the message or any information contained in the message. If you have received this message in error, please immediately advise the sender by reply email and delete this message.

Shawn Frederick, MBA
Administrative Officer
Snohomish Health District
3020 Rucker Ave, Ste 306
Everett, WA 98201

Dear Mr. Frederick:

I am writing to attest to the following with respect to EvergreenHealth Monroe and the Health District's request for a variance to move to Phase 2 of the *Reopening Washington Plan*:

- We currently have 20 percent surge capacity to accommodate a 20 percent increase in suspected or confirmed COVID-19 hospitalizations.
- We are reporting, and will continue to report daily, including on weekends, all data requested by the Washington State Department of Health (DOH) into WA HEALTH.
- We have at least a 14-day supply on-hand of PPE, including N-95 respirators, surgical masks, face shields, gloves, and gowns.
- No staff person is wearing any one N95 respirator or surgical mask for longer than one shift.
- We are following PPE guidance on reuse or extended use as set forth in <https://www.doh.wa.gov/Portals/1/Documents/1600/coronavirus/PPE-Reuse.pdf>.

If you or DOH have any questions regarding this attestation or EvergreenHealth Monroe's capacity to respond to a surge of demand for acute care due to COVID-19, please feel free to contact us.

Sincerely,



Lisa M. LaPlante, MHA
Chief Administrative Officer



Midori Larrabee, MD, FACP
Chief Medical and Quality Officer

May 27, 2020

Shawn Frederick, MBA
Administrative Officer
Snohomish Health District
3020 Rucker Ave, Ste 306
Everett, WA 98201

Dear Mr. Frederick:

I am writing to attest to the following with respect to Cascade Valley Hospital and the Health District's request for a variance to move to Phase 2 of the *Reopening Washington Plan*:

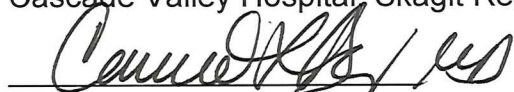
- We currently have 20 percent surge capacity to accommodate a 20 percent increase in suspected or confirmed COVID-19 hospitalizations.
- We are reporting, and will continue to report daily, including on weekends, all data requested by the Washington State Department of Health (DOH) into WA HEALTH.
- We have at least a 14-day supply on-hand of PPE, including N-95 respirators, surgical masks, face shields, gloves, and gowns.
- No staff person is wearing any one N95 respirator or surgical mask for longer than one shift.
- We are following PPE guidance on reuse or extended use as set forth in <https://www.doh.wa.gov/Portals/1/Documents/1600/coronavirus/PPE-Reuse.pdf>.

If you or DOH have any questions regarding this attestation or Cascade Valley Hospital's capacity to respond to a surge of demand for acute care due to COVID-19, please feel free to contact us.

Sincerely,



Cascade Valley Hospital, Skagit Regional Health CEO



Cascade Valley Hospital, Skagit Regional Health CMO





May 29, 2020

Dr. John Wiesman, DrPH, MPH
Washington State Secretary of Health
secretary@doh.wa.gov

Re: Request for Variance from the Stay Home, Stay Healthy Proclamation for Snohomish County to Move from Phase 1 to Phase 2

Dear Secretary Wiesman:

Please find enclosed Snohomish County's formal variance request and application package to move from Phase 1 to Phase 2 All Modifications.

Through a community-wide effort, Snohomish County meets several criteria established by Governor Inslee and the Department of Health to move from Phase 1 to Phase 2 as outlined in the Department's Variance Plan instructions (May 19, 2020). As of May 23rd, Snohomish County had less than 29.4 COVID-19 cases per 100,000 population for the previous two weeks.

With the help of many local partners, including, but not limited to, local county and city governments, healthcare providers and first responders, civic groups, businesses, and Snohomish County residents, we believe that our county is ready to move to Phase 2 of the state plan. Our enclosed application details our county's capabilities to meet or exceed the criteria outlined in the May 19 variance criteria for case investigations and contact tracing, hospital surge capacity, testing capacity, isolation and quarantine capacity, case management assistance, and response to an outbreak in a congregate living setting.

Thank you for leadership and support during this challenging time. We look forward to your prompt response to our application.

Sincerely,

Chris Spitters, MD, MPH
Health Officer

Shawn Frederick, MBA
Administrative Officer

Figure i.1

TOTAL CASES OF COVID-19 IN SNOHOMISH COUNTY BY DATE

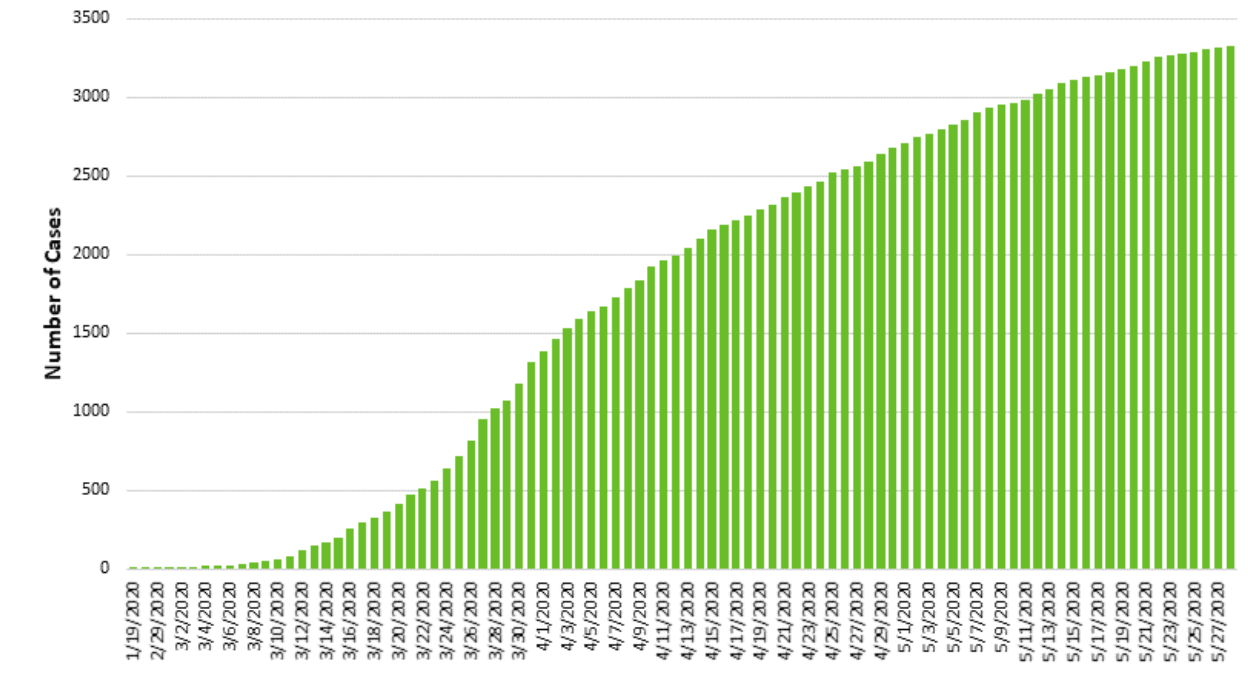
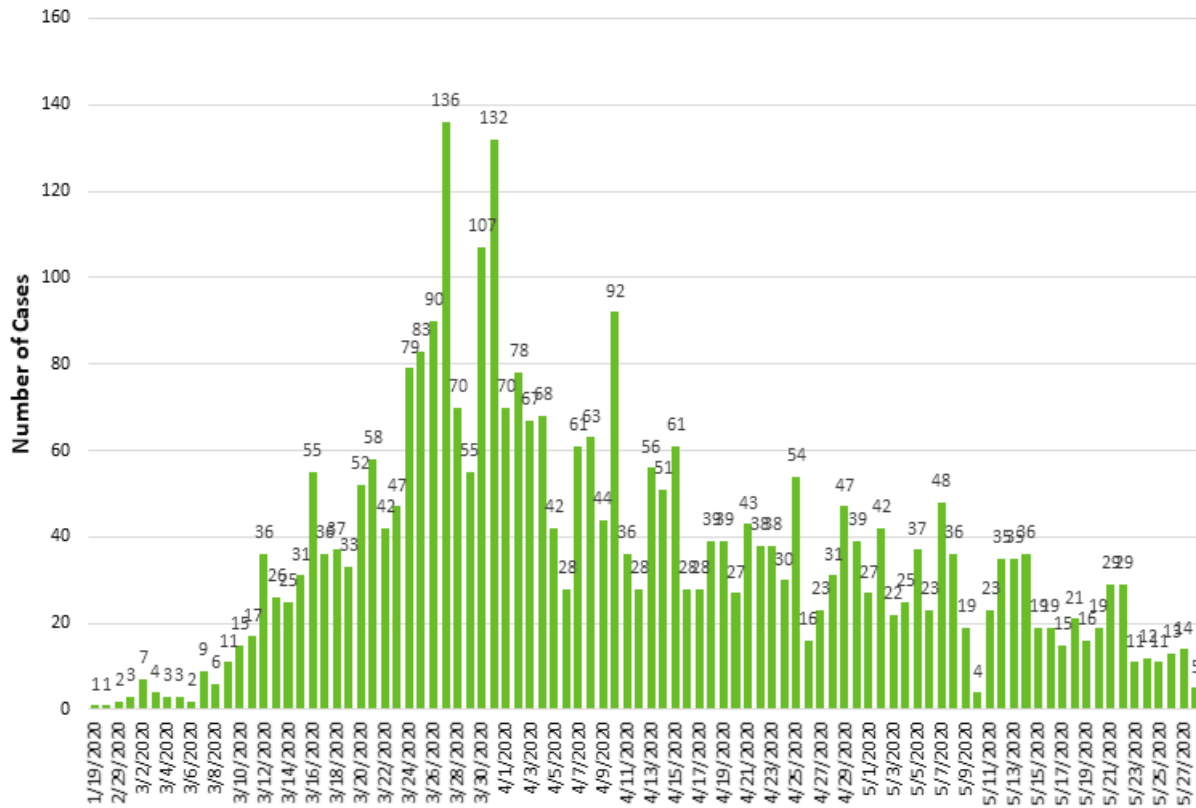


Figure i.2

NUMBER OF NEW CASES REPORT IN SNOHOMISH COUNTY BY DATE



A. COVID-19 TESTING SITES IN SNOHOMISH COUNTY

Testing is widely available throughout Snohomish County. A testing survey of health care facilities conducted by Snohomish Health District and Emergency Support Function (ESF) 8 was conducted on May 27, 2020 and identified **current testing capacity for Snohomish County to be 5790-6560 tests per week, see figure A1.** Actual testing for Snohomish County is included in Figure A2. This includes testing at clinics/healthcare facilities, and testing conducted through Snohomish Health District (SHD) and Medical Reserve Corps at Long term care centers (LTC) and mobile community-based (drive up) testing sites. SHD also coordinated a FEMA/HHS-supported drive up site in Everett, WA from March 23-April 16 that tested 2347 people which could be stood up again in response to a surge in cases.

Community based test sites operated by SHD are accessible to any resident with symptoms and offered throughout the County in partnership with Sno-Isle Library System. There is no charge for this service and proof of insurance is not required. Language and registration assistance are available. SHD is also working with partners such as Snohomish County Human Services to identify and coordinate testing sites serving the unsheltered population and the Pacific Islander Health Board to improve testing access and opportunities for underserved populations. In addition, based on current staffing, SHD offers testing at one LTC facility per day with the goal of providing testing to all skilled nursing facilities by June 10th and all assisted living facilities by June 30th. Testing at LTC facilities is also open to all local first responders and law enforcement. Testing is processed through the Public Health Lab and PNW Laboratories.

Testing services available for residents who are low-income, have no insurance or are underserved in Snohomish County include:

- Community Health Centers of Snohomish County (Everett, Lynwood)
- Everett Clinic (Everett, Smokey Point). Weekly testing metrics available in Figure A1.
- Evergreen Health Care (Monroe and In-Home Services)
- Providence Medical Group (Everett, Mill Creek Monroe)
- SeaMar Health Clinics (Everett, Marysville, Monroe)
- Snohomish Health District CBT and LTC Sites (Locations rotate throughout the county)
- Swedish Edmonds (Edmonds)

Hours for testing sites are illustrated in **Table A1**. CBT availability, times, locations, criteria, and registration are available at www.snohd.org/drive-thru-testing. The registration process is online. A “button” that people can click to go straight to the drive-thru testing page is prominent on our main COVID-19 webpage (www.snohd.org/ncov2019). The SHD Equity Committee is creating an advisory council with natural community leaders in order to improve access to the registration process for non-English speakers.

When new community testing dates are announced, the drive-thru testing page is updated and the new dates, times. Registration information is provided in a press release and in social media

posts to Facebook, Twitter and Instagram, as well as in daily email briefings that are sent to public information professionals throughout Snohomish County. The most recent of the social media posts had a reach of 7,175 people who viewed it, according to metrics from the social media platforms. **There have been 40,312 visits to the drive-thru testing webpage as of May 28.**

In our Frequently-Asked-Questions document, multiple blog posts and social media posts, and on the drive-thru testing page, we also emphasize that people can contact their medical provider for COVID-19 testing and clinic and healthcare sites. Links to information from local medical centers for COVID-19 information and testing are provided under a “Who to Call” heading on our COVID-19 page, as well.

Table A1

COVID Testing Sites in Snohomish County

Proprietor	Site	Hours	Test capacity (#/week)	Low income; Uninsured; Underserved	Advertising
SHD	-Long term care facilities (varies throughout Snohomish County) -Community Based Testing (currently at various Sno-Isle Library locations)	-LTC: 2-3x per week 0900-1400 - CBT: 2-3x per week 0900 - 1600	-LTC: 50-150 per facility. About 100-300 per week -CBT: 30-80 per day. About 100-250 per week	Yes	YES, website and press releases

Proprietor	Site	Hours	Test capacity (#/week)	Low income; Uninsured; Underserved	Advertising
The Everett Clinic	-Smokey Point Everett Clinic -7600 Everett Way Clinic	Monday – Friday 0900-1700 and Saturday and Sunday 0900- 1600	About 1500 per week	Yes	Yes, using their website
Providence Medical Group	-Mill Creek Walk in Clinic -Mill Creek Drive Thru Tent -Monroe walk in clinic	-Mill Creek Walk In: 0800-1930 (7 days a week) -Mill Creek Drive Thru: 1000-1700 -Monroe Walk In: 0800-1930 (7 days a week)	Drive Thru: variable (up to 50 a day and as low as 7 a day). Average about 20 a day (between 140- 350 a week) -Walk in clinics combined (Mill Creek and Monroe): roughly 210 a week	Yes	No external advertising. They only test PMG caregivers and select partner institution patients at the drive thru

Proprietor	Site	Hours	Test capacity (#/week)	Low income; Uninsured; Underserved	Advertising
Providence Medical Center	<p>-PRMCE is conducting rapid/high throughput PCR testing for PUI and inpatients</p> <p>-We have partner with ExpressCare to do a drive thru for Pre-Op swabbing and testing onsite. ExpressCare is running the test on their own analyzers, not the ones we used at PRMCE.</p>	<p>-PRMCE inhouse testing is 24/7</p> <p>-Drive Thru for Pre-Op testing by ExpressCare is Sun-Fri 9am-6pm.</p>	<p>-PRMCE inhouse capacity is 1000 per week</p> <p>-Drive Thru by ExpressCare is 300 per week</p>	We test for all patients that have a clinical need and in preparation for surgery/procedure.	We do not, these are only for clinical need and Pre-Op patients
Swedish Medical Center	-Swedish Edmonds Drive thru	Monday – Friday 0900-1500	About 300 per week	Yes	No. By appointment only but if someone comes without an appointment but has symptoms, they will still get tested

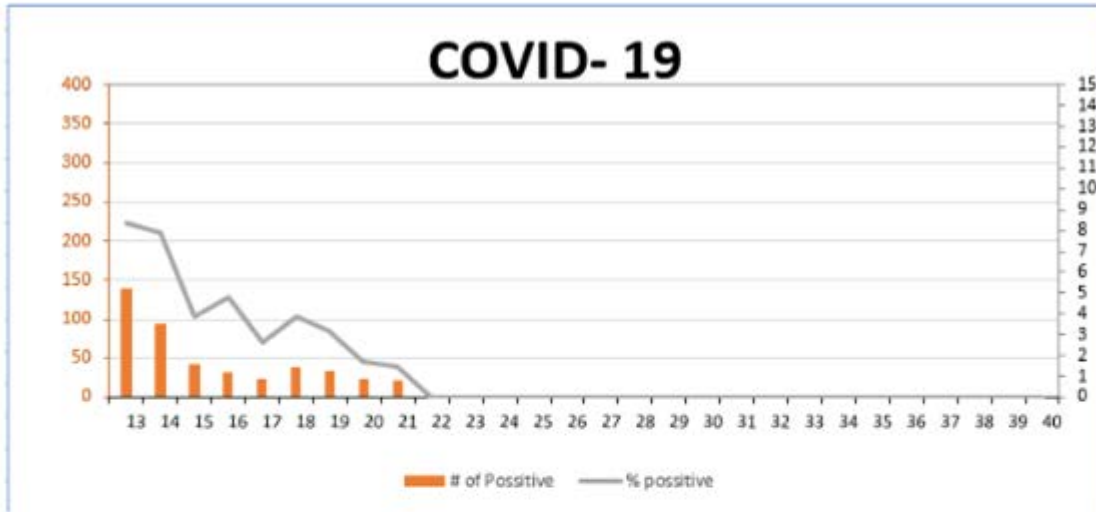
Proprietor	Site	Hours	Test capacity (#/week)	Low income; Uninsured; Underserved	Advertising
Evergreen Hospital Monroe	-Evergreen Health Monroe (in house testing)	24/7 depending on who needs testing	About 1000 per week	Yes	No, by appointment only.
Community Health Centers SC	-Lynnwood CHC -Everett CHC	-7 days a week from 0800-1700	About 20-50 per day (average 140- 350 per week)	Yes	Yes, using Facebook and website
SeaMar Marysville	-SeaMar Marysville/ Everett/ and Monroe (in house testing)	-Monday – Saturday from 0800 - 1700	About 1000 per week	Yes	No, by appointment after evaluation with physician
Total	13 sites	N/A	5790-6560/week	N/A	N/A

Figure A1

The Everett Clinic COVID-19 Weekly Testing Data Summary

The results are from TEC lab testing using a combination of RT-PCR (Abbott m-2000) and Abbott ID NOW Point of Care Assays.

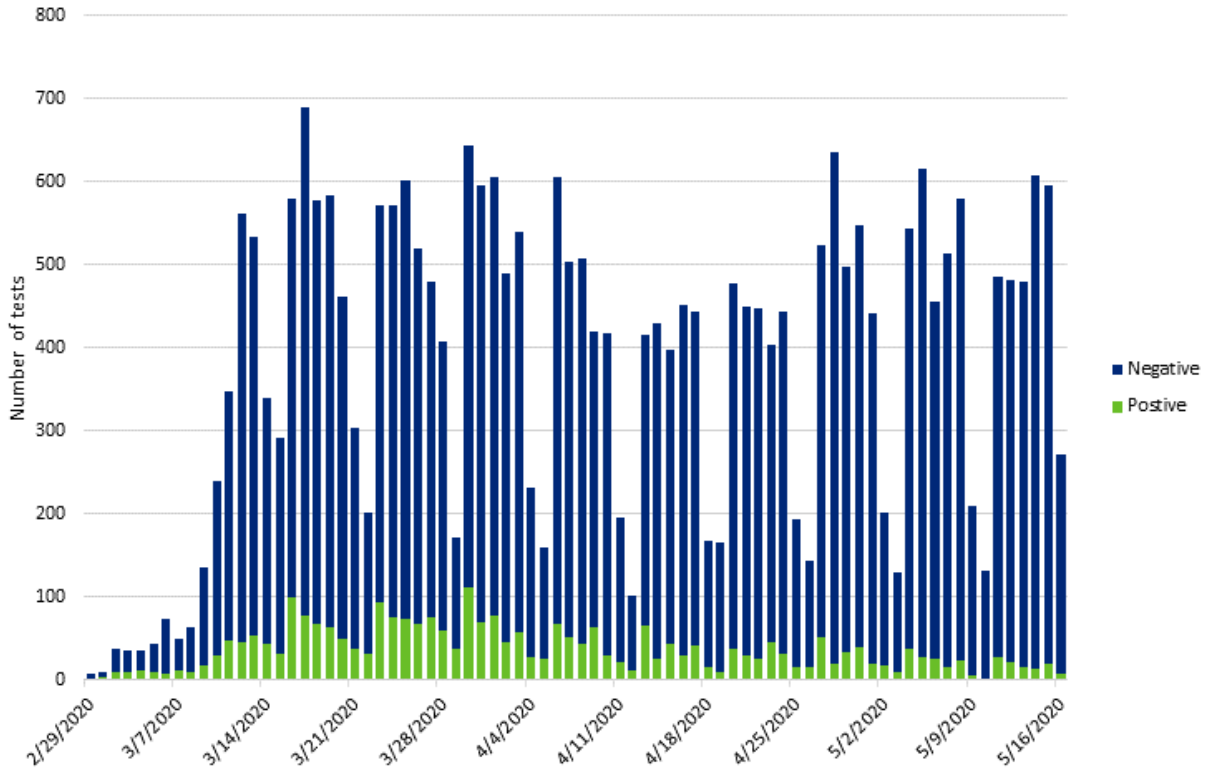
2020 COVID-19 Weekly Testing



Export to Excel

Week number	Week Ending	# of Tests Performed	Number of Positive	% Positive	
13	03/29/2020	1667	139	8	
14	04/05/2020	1190	94	8	
15	04/12/2020	1087	42	4	
16	04/19/2020	669	32	5	
17	04/26/2020	905	24	3	
18	05/03/2020	977	38	4	
19	05/10/2020	1080	34	3	
20	05/17/2020	1382	23	2	
21	05/24/2020	1539	22	1	
22	05/31/2020				

Figure A2
SNOHOMISH COUNTY COVID-19 TESTING BY DATE



B. MEDIAN NUMBER OF DAYS FROM ONSET OF ILLNESS TO COVID-19 SPECIMEN COLLECTION DATE FOR POSITIVE CASES OVER THE PAST 4 WEEKS

The median number of days from reported onset of illness to COVID-19 specimen collection over the past 4 weeks for Snohomish County residents is **2 days**.

Table B1

Week	Median (d)	Mean (d)	Interquartile Range (d)
1 (4/26-5/2/2020)	2	3	0-21
2 (5/3-5/9/2020)	3	4	0-18
3 (5/10-5/16/2020)	2	3	0-11
4 (5/17-5/23/2020)	1	1	0-4
Total	2	3	0-21

C. TOTAL NUMBER OF COVID-19 TESTS REPORTED, NEGATIVE AND POSITIVE COUNTS AND PERCENT POSITIVE OVER EACH OF THE PREVIOUS 4 WEEKS; 50 TIMES THE NUMBER OF POSITIVE TESTS; AND THE PERCENT POSITIVE OF ALL TESTS FOR THE 4-WEEK PERIOD

See **Table C1** for a summary of COVID-19 testing results for each of the previous 4 weeks, and the total for the previous 4-week period. Please note these results are based on SHD verified data from WDRS for lab confirmation date; data available 4/26-5/19/2020.

Table C1

Week	Tests Reported	Negative	Positive	% Positive	50 Times weekly positive number cases
1 (4/26-5/2/2020)	2992	2793	199	6.7	9950
2 (5/3-5/9/2020)	3047	2902	145	4.8	7250
3 (5/10-5/16/2020)	3054	3948	106	3.5	5300
4* (5/17-5/23/2020)	1557	1495	62	4.0	3100
Total	10650	10138	512	4.8	25600

*Incomplete data available

D. SHD’S RESOURCES TO PERFORM CASE INVESTIGATIONS AND CONTACT TRACING USING THE STATEWIDE STANDARDIZED COVID-19 CASE AND CONTACT INVESTIGATION PROTOCOLS

i. CALCULATION SHOWING THE NUMBER OF CASE AND CONTACT TRACERS NECESSARY FOR SNOHOMISH COUNTY:

818,700 residents / 100,000 x 15 = 123 case & contact tracers needed

ii. NUMBER OF SHD STAFF TRAINED AND READY TO PERFORM CASE INVESTIGATIONS AND CONTRACT TRACING, THEIR JOB CLASSIFICATIONS, AND FULL-TIME EQUIVALENTS:

See **Table D1** for a summary of the number of SHD staff trained and ready to perform case investigations and contact tracing. SHD has developed and implemented a surge capacity system of case and contact staff so that we can utilize staff as needed based on the number of cases and contacts at any given time. SHD has submitted a request to the Department of Health (DOH) and received approval for 60 additional case and contact tracers to exceed the minimum 123 FTE.

**Table D1
SHD Staff Available for Case Investigations and Contact Tracing**

Job Classification	Number	FTE	Investigation capacity/4 per day
Epidemiologist	3	3.0	12
Public Health Nurse	7	7.0	28
Disease Intervention Specialist	6	6.0	24
Healthy Community Specialist	4	4.0	16
Total	20	20.0	80

iii. NUMBER OF COUNTY/CITY GOVERNMENT STAFF TRAINED AND READY/IN THE PIPELINE TO PERFORM CASE INVESTIGATIONS AND CONTACT TRACING

SHD does not have any County/City government staff trained and ready to perform case investigations and contact tracing.

iv. NUMBER OF VOLUNTEERS OR NON-GOVERNMENTAL EMPLOYEES TRAINED AND READY TO PERFORM CASE INVESTIGATIONS AND CONTACT TRACING

Table D2

Job Classification	Number	FTE	Investigation capacity/ 4 per day
Medical Reserve Corp (Volunteers)	16	8.0	32
Total	16	8.0	32

v. SUBTOTAL OF THOSE TRAINED AND READY TO PERFORM CASE INVESTIGATIONS AND CONTACT TRACING BY FTE

SHD has 32 FTE trained and ready to perform case investigations and contact tracing.

vi. NUMBER OF PERSONS/FTE IN THE PIPELINE TO BE TRAINED BY JUNE 15, 2020

Table D3

Job Classification	Number scheduled for hire/training	FTE	Investigation capacity/4 per day
Disease Intervention Specialist	50	50.0	200
Healthy Community Specialist	1	1.0	4
Medical Reserve Corp (Volunteers)	32	16.0	64
Total	83	67.0	268

vii. GAP BETWEEN THE MINIMUM OF 15/100,000 (123 FTE) AND THE TRAINED AND TO-BE- TRAINED PERSONNEL

Snohomish Health District has 95 FTE available or in the pipeline to recruit and train to conduct case investigators and contact tracers; 28 less than the required 123 necessary to meet the minimum 15 case and contact investigators per 100,000 residents. **However, SHD staff and volunteers (ready and trained and those in the pipeline) can conduct 380 case investigations per day.**

Table D4

Job Classification	Trained and ready	Number scheduled for hire/training	Total Available by June 15, 2020	FTE	Investigation capacity/4 per day
Epidemiologist	3	0	3	3.0	12
PHN	7	0	7	7.0	28
Disease Intervention Specialist	6	50	56	56.0	224
Healthy Community Specialist	4	1	5	5.0	20
Medical Reserve Corp (Volunteers)	16	32	48	24.0	96
Total	36	83	119	95.0	380

SHD submitted and received approval for 60 DOH FTE staff, if necessary, to support case investigations and contact tracing. **These 60 FTE, in addition to the 95 FTE available, ensures that SHD has 155 FTE available case investigators and contact tracers, exceeding the necessary 123.** Note: Snohomish County is part of centralized investigations by DOH.

Should additional case investigators and contact tracers be needed (or forecasted to be needed) exceeding the available 155 FTE, SHD and the Snohomish County Emergency Coordination Center (ECC) will request resources from the State EOC for trained staff; request support through mutual aid; or hire additional staff.

Table D5

Job Classification	Trained and ready	Number scheduled for hire/training	Total Available by June 15, 2020	FTE	Investigation capacity/4 per day
Epidemiologist	3	0	3	3.0	12
PHN	7	0	7	7.0	28
Disease Intervention Specialist	6	50	56	56.0	224
Healthy Community Specialist	4	1	5	5.0	20
Medical Reserve Corp (Volunteers)	16	32	48	24.0	96
DOH Staff	60	0	60	60.0	240
Total	96	83	179	155.0	620

viii. CERTIFICATION LETTERS FOR SHD PERSONNEL FOR CASE AND CONTACT INVESTIGATIONS



May 28, 2020

Matthew Zimmerman
Washington State Department of Health

Dear Mr. Zimmerman,

The Snohomish Health District would like to request the support of surge staffing available by the Washington State Department of Health to assist in our response to COVID-19. Internally we have pulled staff from all areas of the Health District and have integrated the Medical Reserve Corps into our response efforts to maximize our ability to meet the needs of our county.

The Health District would like to request the support of 60 staff from your pool of available staffing resources. This would allow the Health District to not only meet the needs of the community in responding to COVID-19 but also ensure that other immediate public health concerns are able to be addressed in a timely manner.

We look forward to collaborating with the Department of Health as we continue to respond to COVID-19.

Sincerely,

Shawn Frederick
Administrative Officer
Snohomish Health District

Christopher Spitters, MD, MPH
Health Officer
Snohomish Health District

From: [Zimmerman, Matthew S \(DOH\)](#)
To: [Chris Spitters](#)
Cc: [Katie Curtis](#); [Shawn Frederick](#); [Linda Carl](#); [Courogen, Maria \(DOH\)](#); [DOH-HR \(DOH\)](#)
Subject: RE: Snohomish Health District Request for Assistance
Date: Thursday, May 28, 2020 3:56:00 PM
Attachments: [SHD ASSISTANCE REQUEST 20200528.pdf](#)

Dr. Spitters,

Thank you for submitting this request, it has been a pleasure working with your team to plan for supporting these efforts. We acknowledge the request for support of 60 staff from our pool of available staffing resources. We will ensure that we have the capacity to fulfill this request as you identify the need for activating them to support COVID-19 response efforts within your community.

I am including Maria Courogen and Stephanie Price on the Cc line for their visibility and to ensure that the appropriate next steps are taken on our end.

We look forward to continuing to work with you all and to collaborate closely with Katie to ensure that we are able to support you to the fullest and to be able to fulfill this request in a rapid manner.

Best,

Matthew Zimmerman
Strategic Planning Officer
Shoreline IMT, WA DOH
360-870-1434

From: Chris Spitters [mailto:cspitters@snohd.org]
Sent: Thursday, May 28, 2020 3:26 PM
To: Zimmerman, Matthew S (DOH) <matthew.zimmerman@doh.wa.gov>
Cc: Curtis, Katie (DOHi) <kcurtis@snohd.org>; Frederick, Shawn (DOHi) <sfrederick@snohd.org>; Linda Carl <lcarl@snohd.org>
Subject: Snohomish Health District Request for Assistance

Hi, Matthew.

Attached is a formal written request for assistance with COVID-19 transmission suppression efforts (i.e., case investigation and contact tracing) that is part of our response planning, as well as a required element of our forthcoming application for a variance to proceed to phase 2. My understanding is that Katie Curtis has had productive conversations with your team regarding this request. In addition to accepting this written request, it would be helpful to us if you could please respond to this email with an acknowledgement so that we may include it in our variance application. Please feel free to contact me on my cell phone if you would like to discuss it directly with me.

Thank you for considering this request and for supporting Snohomish County in our shared response to this emergency.

Chris Spitters
Cell 425 422 2049

Christopher Spitters, MD, MPH | Health Officer | Snohomish Health District
3020 Rucker Avenue, Suite #306 | Everett, WA 98201 | **p: 425.339.5210**

Public Health: Always working for a safer & healthier Snohomish County

NOTICE: All emails and attachments sent to and from the Snohomish Health District are public records and may be subject to disclosure pursuant to the Public Records Act (RCW 42.56).

i. TOTAL NUMBER OF CASES IDENTIFIED OVER THE PAST FOUR (4) WEEKS AND THE PERCENTAGE OF CASES REACHED BY PHONE OR IN PERSON WITHIN 24 HOURS OF RECEIPT OF POSITIVE LAB TEST REPORT

Table D6

Week	Cases Reported	Number contacted within 24 hours	Percent contacted within 24 hours	Number contacted within 48 hours	Percent contacted within 48 hours
1 (4/26-5/2/2020)	212	104	49.1%	132	62.3%
2 (5/3-5/9/2020)	200	97	48.5%	132	66.0%
3 (5/10-5/16/2020)	110	69	62.7%	81	73.6%
4 (5/17-5/23/2020)	134	85	63.4%	98	73.1%

Data source WDRS, Snohomish Health District COVID-19 line list. Data excluded serology cases as they indicate older infections and are low priority for investigation.

ii. TOTAL NUMBER OF CLOSE CONTACTS IDENTIFIED OVER THE PAST FOUR (4) WEEKS AND THE PERCENTAGE OF CONTACTS REACHED BY PHONE OR IN PERSON WITHIN 48 HOURS OF RECEIPT OF POSITIVE LAB TEST REPORT ON A CASE

Table D7

Week	Contacts identified	Number contacted within 48 hours	Percent contacted within 48 hours
1 (4/26-5/2/2020)	221	167	76%
2 (5/3-5/9/2020)	313	215	69%
3 (5/10-5/16/2020)	160	120	75%
4 (5/17-5/23/2020)	140	120	86%
Total	834	622	75%

Data source: Snohomish Health District contact list. Data excludes DOH centralized investigation cases, as contact data is unavailable.

E. NUMBER AND TYPE OF ISOLATION / QUARANTINE FACILITIES SECURED TO HOUSE PERSONS WITH COVID-19 WHO NEED OR DESIRE THIS ASSISTANCE

- **Facility 1:**

- Angel of the Winds Arena
- Conference Center/Sporting Facility
- Isolation capacity = 48
- Quarantine capacity = 48
- Secured until June 30th (see below for extension plans)
- Services: housing, laundry, meals, snacks, internet access, telemedicine, onsite medical care (Providence Regional, SeaMar, Pioneer Human Services), facility coordinators, 24-hour security, housekeeping, MAT, behavioral health, social workers, phones/tablets, clothing, pet sheltering and veterinary care
- Services coordinated by Snohomish County Human Services and ESF 6

- **Facility 2:**

- Snohomish County Fairgrounds, Gary Weikel Building
- Event Pavilion
- Isolation capacity = 24
- Quarantine capacity = 24
- Secured July 1-Indefinite
- Services: housing, laundry, meals, snacks, internet access, telemedicine, onsite medical care (Providence Regional, SeaMar, Pioneer Human Services), facility coordinators, 24-hour security, housekeeping, MAT, behavioral health, social workers, phones/tablets, clothing, pet sheltering and veterinary care
- Services coordinated by Snohomish County Human Services and ESF 6

- **Surge Capacity:**

Current plans and facilities (The Gary Weikel Building) have the ability to surge to:

- Isolation capacity = 150
- Quarantine = 150

Medical providers who have identified a positive COVID-19 case or who have a patient with a pending COVID-19 test that does not have the ability to isolate or quarantine, contact the Isolation and Quarantine site coordinator to request admittance. The I and Q site coordinator will request and obtain the approval letter from Snohomish County Health Officers, Dr. Chris Spitters. Transportation is coordinated by the I and Q site and provided through local cabulance service.

F. DESCRIBE HOW THE LOCAL HEALTH JURISDICTION PROVIDES OR LINKS PERSONS WITH IN- HOME ISOLATION OR QUARANTINE WITH NEEDED SERVICES WHEN REQUESTED

Snohomish Health District supports individuals in home isolation in accordance with our previously established protocol for supporting in-home TB isolation.

SHD contact investigators assess the individual to determine need for additional services to support in-home isolation or quarantine, in coordination with Health Officer if necessary. Basic needs, including the purchase and delivery of food and medications are coordinated through the contact investigator and the MRC coordinator.

Referrals from outside healthcare and social service agencies can be submitted through the SHD Communicable Disease 24-hour call line.

To support Snohomish County residents experiencing homelessness, in April of 2020, Snohomish County created the Snohomish Agencies for Engagement (SAFE) Team in partnership with the City of Everett, City of Lynnwood, City of Mill Creek, City of Monroe, South County Fire, Fire District 7, Snohomish County Sheriff's Office, Snohomish County Law Enforcement Embedded Social Workers, and Sea Mar Family Medicine.

SAFE utilizes physicians, EMTs, social workers, and law enforcement to perform outreach to vulnerable populations, especially Snohomish County residents experiencing homelessness. Their objective is to provide COVID-19 screenings (questions, temperature, blood pressure, and oxygen stats), provide information about how to protect themselves from COVID-19 and what to do if they contract the virus, education on best hygiene practices with available resources, and connect those that are willing to services such as housing, substance use disorder treatment, benefits, and more.

SAFE has contacted approximately 400 people since April.

G. DESCRIBE THE LOCAL HEALTH JURISDICTION'S CAPACITY TO CONDUCT OUTBREAK INVESTIGATIONS IN CONGREGATE LIVING SETTINGS AND WORKPLACES

Snohomish Health District currently supports two outbreak response task forces within its ICS activation to respond to outbreaks or investigations within congregate living settings and workplaces:

- Long term Care Task Force
- Employer Notification Task Force

The purpose of the task force is to rapidly provide assistance and appropriate testing in a congregate living facility or work environment experiencing cases of COVID-19. Task force staffing includes:

- 1 Infection preventionist
- 2 RNS
- 1 MA
- 2 PHNs
- 1 EH
- 1 DIS
- 1 Outreach specialist (Equity Committee representative)

These teams are supported by Snohomish County MRC as requested.

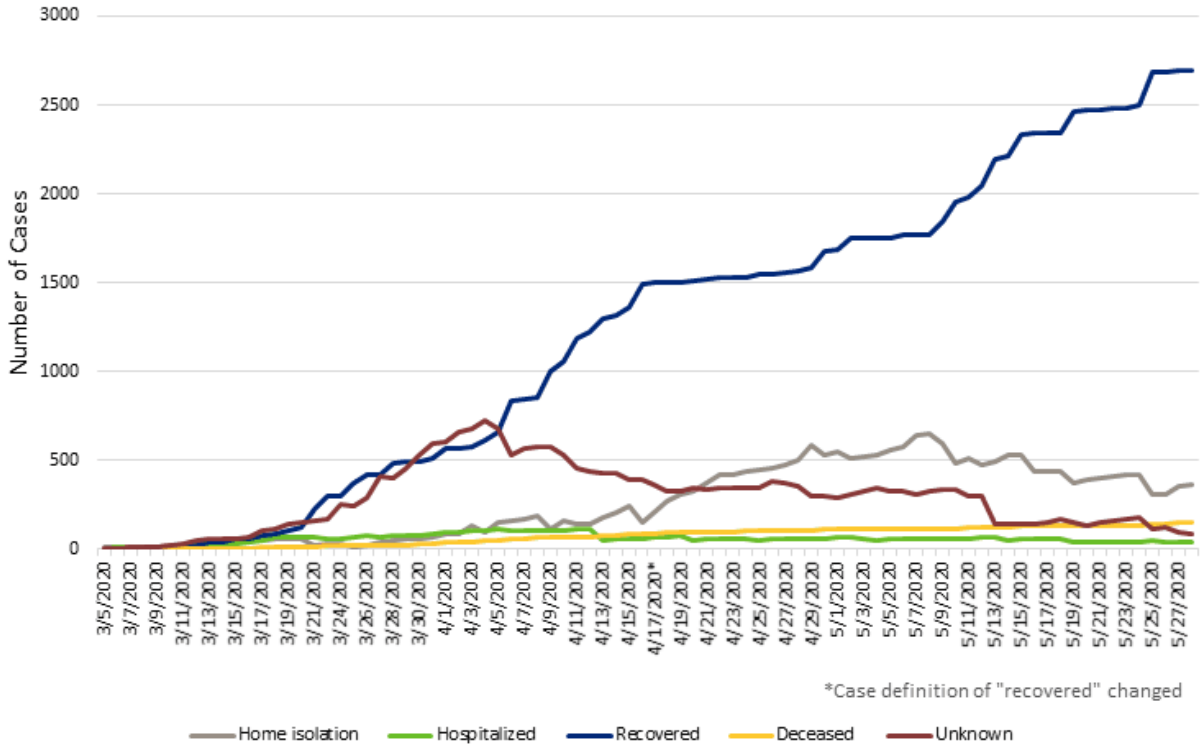
In addition, SHD has division-specific expertise available to address cases in food service establishments (Environmental Health Food Safety Program) and in childcare settings (Child Care Health Program).

Snohomish Health District maintains a two-week supply of testing kits and PPE at SHD and ECC calculated burn rates and also has point of care testing capabilities with Abbott NOW testing currently stationed at SHD and Community Health Centers of Snohomish County. We have a mobile testing team that includes:

- 1-2 SHD Staff
- 1 MRC - Medical consult
- 1 MRC - Documentation
- 1 MRC – Lab courier

H. ADDITIONAL CONSIDERATIONS

a. STATUS OF COVID-19 CASES IN SNOHOMISH COUNTY BY DATE



b. METRICS AND CONTINGENCY PARAMETERS FOR CONSIDERING RETURN TO MORE STRICT NON-PHARMACEUTICAL INTERVENTIONS

Category	Measure	DOH Target	Current SHD	Contingency Thresholds
COVID-19 Activity	Incidence of new cases reported during prior two weeks	Target: <10 cases/100K per 14 days	29.4	>50 cases/100K per 14 days
	Reproductive rate by region	Target: $R_e < 1$	Not Calculated	$R > 1.0$
Healthcare system readiness	% licensed beds occupied by patients (i.e., hospital census relative to licensed beds)	Targets: Green: $\leq 80\%$ (Yellow: 81-90%; Red: >90%)	74%	>80%
	% licensed beds occupied by suspected and confirmed COVID-19 cases	Target: Green: $\leq 10\%$ (Yellow: 11-20%; Red: >20%)	6%	>10%
Testing	Average number of tests performed per day during the past week (or average % tests positive for COVID-19 during the past week)	Target: 50 times the number of cases (or 2%)	4%	>5% over a 7-day period
	Median time from symptom onset to specimen collection among cases during the past week	Target: median ≤ 2 days	1	Median >4 days

Category	Measure	DOH Target	Current SHD	Contingency Thresholds
Case and contact investigations	Percent of cases reached by phone or in person within 24 hours of receipt of positive lab test report (for last 14 days)	Target: 90%	63%	<60%
	Percent of contacts reached by phone or in person within 48 hours of receipt of positive lab test report on a case (for last 14 days)	Target: 80%	80%	<60%
Protecting high-risk populations	Number of outbreaks reported by week (defined as 2 or more non-household cases epidemiologically linked within 14 days in a workplace, congregate living or institutional setting)	Target: 0 for small counties (<75,000), 1 for medium counties (75,000-300,000), 2 for large counties (>300,000)	5/10-5/16/2020 - 2 5/17-5/23/2020 - 1	≥4 outbreaks per week for two consecutive weeks

c. EMERGENCY SUPPORT FUNCTION 4 (FIRE AND EMS), EMERGENCY SUPPORT FUNCTION 6 (MASS CARE AND SHELTERING), EMERGENCY SUPPORT FUNCTION 8 (PUBLIC HEALTH) AND EMERGENCY SUPPORT FUNCTION 13 (LAW ENFORCEMENT) DATA CONSIDERATIONS

The Snohomish County ECC (specifically ESF 4, 6, 8, and 13) currently tracks the following data elements.

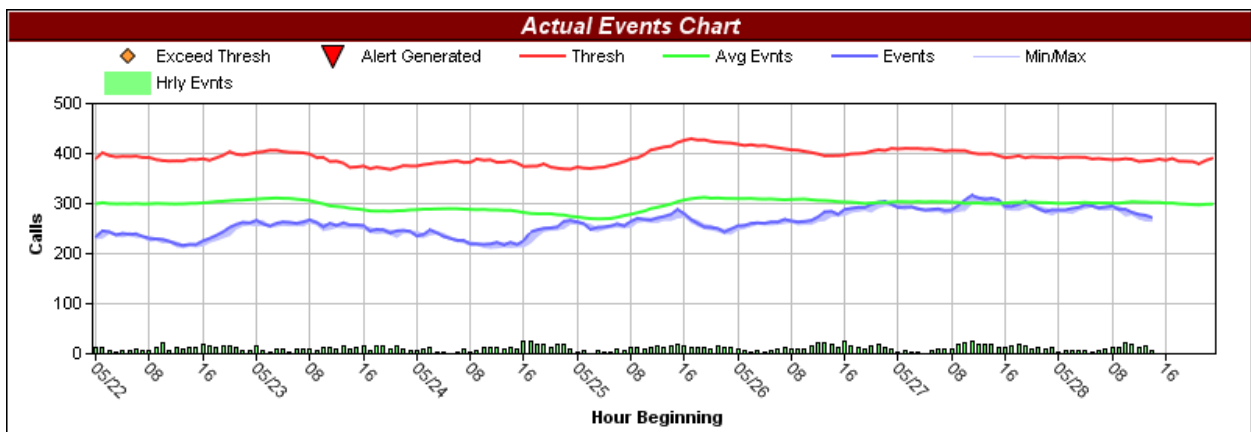
The fire and EMS data elements are looking the dispatch data in real time on a rolling 24 hours. ESF 4 can set up alerts for each of these and they are current set at 2 time standard deviation of the previous 52 weeks. When that threshold is reached the member of the data team are then alerted via email or text message. A subgroup of the team will, after receiving an alert, review all the data elements and determine the next course of action.

On March 7, 2020, Sno911, the county dispatch agency, implemented Protocol 36 in the emergency medical dispatch (EMD) system, which is a pandemic protocol determinant code.

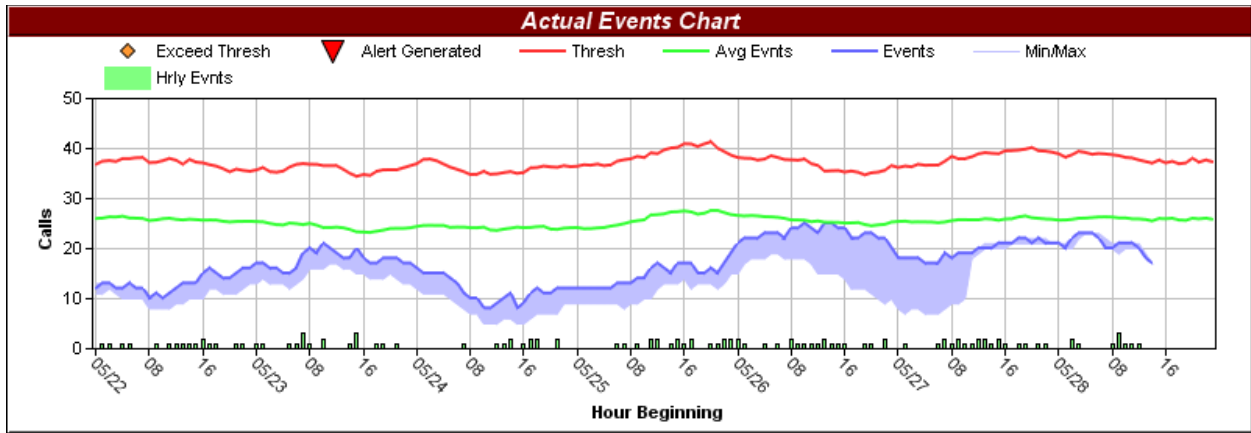
The current data points for Fire and EMS are:

- County Incidents
- EMS County Incidents
- Protocol 36 Triage – the EMS incidents that went to Protocol 36
- Protocol 36 (remained) – the EMS dispatches that remained in Protocol 36
- Shortness of Breath CAD EMD
- Falls/Weakness CAD EMD
 - These two EMD determinates have been identified in as the primary or secondary impressions of the COVID-19 positive patients that have been transported by the fire service in the county

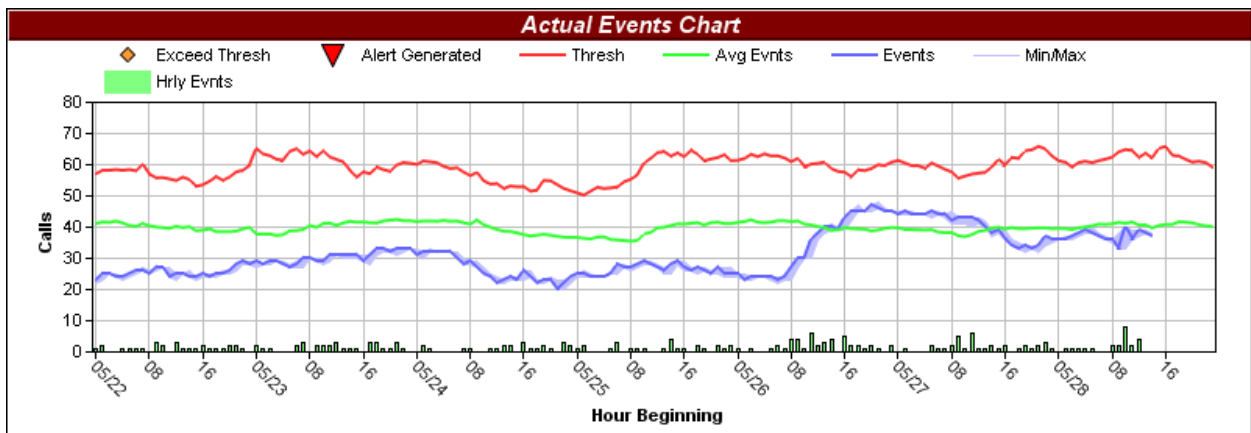
SNO911 FD – County Incidents (CAD Type)



SNO911 – Protocol 36 (remained)



SNO911 – Shortness of Breath CAD EMD



d. SNOHOMISH COUNTY FIRE CHIEFS' ASSOCIATION ATTESTATION



Snohomish County Fire Chiefs' Association

Established 1970 "Progressive Fire Protection Through Cooperation"

12425 Meridian Ave S Everett 98208

Phone – 425.551-1270

Fax – 425-551-1273

Officers

President

Chief Chris Alexander

Vice-President

AC Rich Llewellyn

Treasurer

Chief Jim Haverfield

Immediate Past

President

Chief Travis Hots

Zone Representatives

Zone 9

Chief Thad Hovis

Zone 11

Chief Eric Andrews

Zone 12

Chief Keith Strotz

Liaisons

Legislative

Chief Brian McMahan

Fire Commissioners

Chief Martin McFalls

Training/Safety Officers

DC Craig Clinton

Special Operations

DC Larry Huff

EMS Council

Chief Dennis Fenstermaker

Fire Prevention

DC Mike Fitzgerald

Washington Fire Chiefs

Chief Kevin O'Brien

Policy/Procedure

Committee Chair

Chief Eric Andrews

SNO911 Fire Tac

AC Steve Guptill

Shawn Frederick, MBA
Administrative Officer
Snohomish Health District
3020 Rucker Ave, Ste 306
Everett, WA 98201

Dear Mr. Frederick:

On behalf of the Snohomish County Fire Chiefs' Association, I am writing to attest to the following with respect to Fire/EMS preparedness and the Health District's request for a variance to move to Phase 2 of the *Reopening Washington Plan*:

- We currently have two months' Personal Protective Equipment (PPE) for every fire fighter in the county on-hand.
- We are continuing to use our county task force to bulk purchase PPE to maintain that level of supply for the rest of the year.
- To extend the useful life of our N-95 masks, we purchased UV-C units to decontaminate the masks up to 10 times before disposal.
- We have instituted the scout process countywide for all our medical responses to insure those that have direct patient contact are properly protected.
- To properly decontaminate our vehicles, equipment, and facilities, we have purchased applicators and solution and made them a part of our standard decontamination procedures.
- We are tracking prehospital and hospital key metrics to provide early warning of an increase in cases both county-wide and by region of the county. This capability is shared with our law enforcement, public health, emergency management, and hospital partners.

If you or DOH have any questions regarding this attestation or Fire/EMS preparedness to respond to COVID-19, please feel free to contact me.

Sincerely,

Christopher W. Alexander
Fire Chief, Mukilteo Fire Department
President, Snohomish County Fire Chiefs' Association

e. SNOHOMISH COUNTY SHERIFF'S OFFICE ATTESTATION

M E M O R A N D U M



DATE: May 28, 2020
TO: Snohomish County Board of Health
FROM: Sheriff Adam Fortney
RE: Snohomish County Request for Phase 2

I strongly support the Snohomish County Board of Health and the Snohomish County Council's decision to request a variance and move to Phase 2 of Governor Inslee's phased reopening plan. I would encourage the State to quickly approve the request and move Snohomish County into Phase 2.

The residents of Snohomish County have shown and continue to show they are following the safety precautions from the Governor and for the most part, our communities are doing all they can to keep themselves, their families and their neighbors safe and healthy.

As the curve continues to flatten, I believe it is time to trust local government with the knowledge of what is best for their respective communities. It is a unique time when all of Snohomish County government is in agreement, and it is time for Snohomish County to move to Phase 2 and help our residents get back to work safely.

I am proud to join our county leaders and I look forward to helping in any way I can to assist with getting Snohomish County back on a safe path to economic recovery.

NORTH PRECINCT
15100 40TH Ave. N.E.
Marysville, WA 98271
Phone (425) 388-5200
FAX (360) 653-7609

SOUTH PRECINCT
15928 Mill Creek Blvd
Mill Creek, WA 98012
Phone (425) 388-5250
FAX (425) 337-5809

EAST PRECINCT
515 Main Street
Sultan, WA 98294
Phone (425) 388-6260
FAX (360) 793-7774

CORRECTIONS
3000 Rockefeller Ave. M/S 509
Everett, WA 98201
Phone (425) 388-3474
FAX (425) 339-2244

ADMINISTRATION
3000 Rockefeller Ave. M/S 606
Everett, WA 98201
Phone (425) 388-3393
FAX (425) 388-3805

f. SNOHOMISH COUNTY SHERIFF AND POLICE CHIEFS' ASSOCIATION LETTER OF ATTESTATION